



CapitalDynamics[®]
TRULY INVESTED.

Responsible Investment Policy

2025

Table of Contents

	Our Investment Beliefs	3
	Capital Dynamics' Responsible Investment Committee	4
1.	Responsible Investment Principles and Purpose.....	5
2.	Our long-standing commitment to Responsible Investment.....	6
3.	Principles for Responsible Investment ("PRI") and Sustainable Development Goals ("SDGs").....	6
	Principles for Responsible Investment	6
	Sustainable Development Goals	6
4.	Responsible Investment Evaluation.....	7
5.	RI Assessment Overview	9
	Proprietary Rating System	9
	Exclusion Framework	10
	Business Line and Strategy-specific Approach	10
	Oversight	11
	Conflicts of interest.....	12
	Guidelines on proxy voting and stewardship	12
	RI Education and Training	12
6.	Investment Monitoring	13
	General.....	13
	RepRisk.....	13
	EarthScan™ by Mitiga.....	14
	Position Green.....	14
7.	Reporting.....	14
	Investor Reporting	14
	Corporate Annual Responsible Investment Report	14
	SFDR Fund Reporting and European ESG Template ("EETs").....	14
	SFDR Principal Adverse Impacts on Sustainability	15
8.	Statement on Modern Slavery Act	16
9.	Engagement, Industry Memberships and Disclosures	16
	Engagement with policy makers and standard setters	17
10.	Strategy-specific approach — Private Equity	18
	Primaries	18
	Secondaries	19
	Direct Investments	19
11.	Strategy-specific approach — Clean Energy	21
12.	Attestation.....	24

Our Investment Beliefs

As a responsible investor, Capital Dynamics is firmly committed to making investments with fund managers, in companies and projects that align with our core Responsible Investment (“RI”) values. All investment decisions at the firm are guided by our Responsible Investment policy based on four foundational principles:

- Principle 1 |** Responsible Investment (RI) leads to enhanced long-term financial returns for our investors
- Principle 2 |** The Capital Dynamics investment platform, across all strategies, follows a rigorous approach to RI investment diligence and actively re-underwrites our rating of existing investments
- Principle 3 |** The data identified through our RI investment diligence is tracked and analyzed during the holding period continually to improve our RI process across each of our investment strategies
- Principle 4 |** Capital Dynamics understands the importance of its role as a corporate citizen and prioritizes its commitment to the local communities in which it operates and invests

Capital Dynamics' Responsible Investment Committee

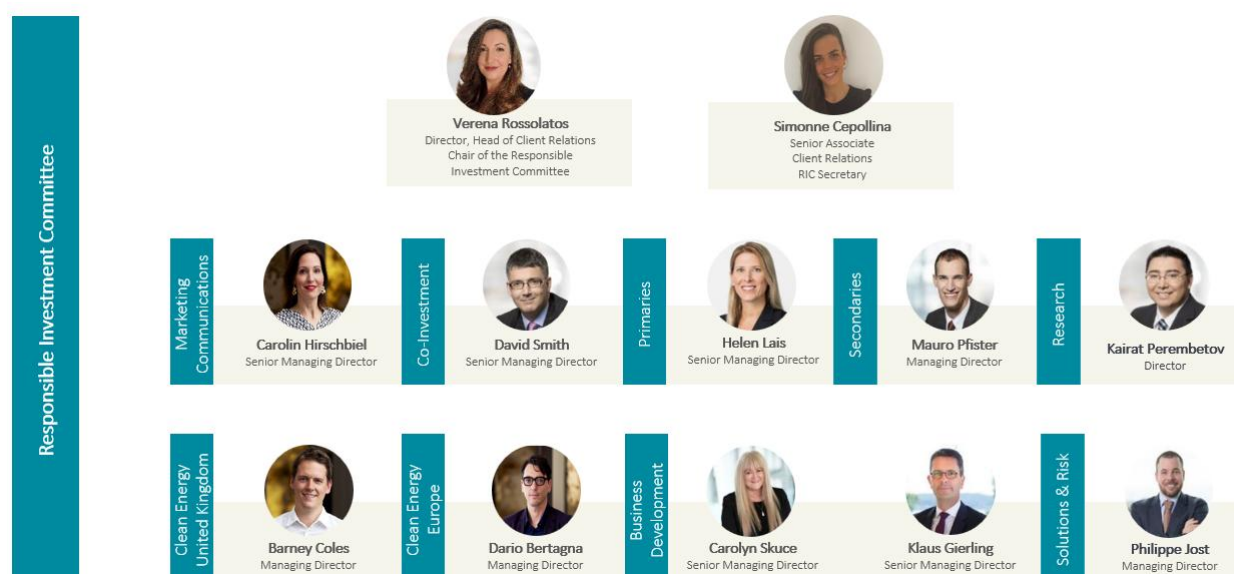
In 2018, we formed the Capital Dynamics Responsible Investment Committee with representation and support from across the leadership of the organization from Private Equity and Clean Energy as well as from central management.

The remit of the committee includes implementing a consistent Responsible Investment framework, oversight over the R-Eye™ rating system coupled with a reporting protocol ensuring that the firm embraces the principles of Responsible Investment as an organization and contributes to the discourse and thought leadership about Responsible Investment in the alternative asset classes.

Our Responsible Investment Committee ("RI Committee") is responsible for:

1. Reviewing the RI policy on an ongoing basis;
2. Making adjustments and additions to the policy as RI-related issues arise; and
3. Ensuring the effective implementation of the policy across our firm's business lines.

The RI Committee reports to the firm's Executive Committee and Risk Committee and its responsibilities are governed by the Responsible Investment Committee Charter.



1. Responsible Investment Principles and Purpose

Capital Dynamics (the “firm”) has a long-standing commitment to corporate responsibility; it is deep-rooted in the firm’s DNA. In recognition of the importance of Responsible Investment, each of the firm’s business lines (Private Equity and Clean Energy) aims to integrate the United Nations-supported Principles for Responsible Investment (“PRI”), the United Nations Sustainable Development Goals (“SDGs”) and other RI factors throughout the investment appraisal, due diligence, decision-making and post-investment monitoring process. Moreover, the firm’s proprietary R-Eye™ (inspired by the shape of the human eye) Rating System (with the pupil of the R-Eye™ containing the average score) has furthered the level of transparency offered to clients.

This policy represents our formal overarching Responsible Investment policy, which all business lines are required to follow. Given the breadth of the firm’s offerings and their specific governance factors, sub-policies have been developed for each business line, described herein.

Capital Dynamics believes that Responsible Investment leads to enhanced long-term financial returns¹ and a closer alignment of objectives amongst investors, stakeholders and society at large. The firm is truly invested in tracking the impact of RI considerations in an effort to better understand how these factors affect performance over time. While considerable supporting data are available covering the public markets, this is not the case for private markets. Given the “hands on” and long-term nature of the asset classes in which Capital Dynamics participates, the firm believes that the relationship between Responsible Investment and performance may be closer and more pronounced in the private markets. Capital Dynamics expects that by tracking data, the firm will develop a better understanding of this relationship and contribute to the public discourse in this growing sphere of investment activity. Furthermore, Capital Dynamics also understands that RI best practices must extend beyond the investments made on behalf of the firm’s clients. Capital Dynamics is truly invested in its role as a global corporate citizen and prioritizes its commitment to the local communities where it operates, invests and works.

¹ Based on a survey conducted by Capital Dynamics in 2019. 32% of surveyed Private Equity GPs reported incremental growth in EBITDA across portfolios as a result of Responsible Investment implementation.

2. Our long-standing commitment to Responsible Investment

Capital Dynamics was one of the first signatories to the UN Principles for Responsible Investment (UN PRI) in 2008 and has continuously built out its expertise in Responsible Investment. Each year, the firm participates in the PRI's annual transparency assessment, which is designed to benchmark signatories in regard to their progress and implementation of Responsible Investment principles. It is also a key step in building a common language and industry standard for reporting and Responsible Investment activities. Since 2019 the firm has also participated in the annual GRESB² surveys in our European Clean Energy business line.

3. Principles for Responsible Investment ("PRI") and Sustainable Development Goals ("SDGs")

Principles for Responsible Investment

Capital Dynamics has been a signatory of the PRI since 2008. In 2024, Capital Dynamics was once again awarded the highest ranking (5 Stars) by PRI in all reporting modules³.

As a proud signatory, Capital Dynamics is firmly committed to the six PRI principles:

1. Incorporate ESG issues into investment analysis and decision-making processes
2. Be active owners and incorporate ESG issues into our ownership policies and practices
3. Seek appropriate disclosure on ESG issues by the entities in which we invest
4. Promote acceptance and implementation of the Principles within the investment industry
5. Work together to enhance our effectiveness in implementing the Principles
6. Report on our activities and progress towards implementing the Principles

Sustainable Development Goals

The firm has modeled its proprietary R-Eye™ Rating System based on the United Nations SDGs⁴. Each R-Eye™ scorecard is evaluated based on a subset of the SDG's depending on the underlying investment strategy.

The R-Eye™ scores are then reviewed by the investment teams on at least an annual basis and key RI issues or opportunities are flagged by the respective investment teams, or the Responsible Investment Committee representatives on those investment teams, to either the Chair of the Responsible Investment Committee and/or the full RIC.



² A recognized ESG benchmark for real assets, originally known as the Global Real Estate Sustainability Benchmark, promoted by GRESB B.V.

³ The third-party ratings shown were received by Capital Dynamics in the year indicated, based on activities undertaken in the prior calendar year. Capital Dynamics did not provide any direct compensation in connection with obtaining such third-party ratings, although in certain cases we have paid a fee to become members of an organization, which membership is a precondition to obtaining a rating, or have paid a fee in order to use the issuing organization's logo in our marketing materials.

⁴ Illustration of Sustainable Development, source: <https://www.unpri.org/sdgs/the-sdg-investment-case/303.article> accessed: April 1, 2018.

Capital Dynamics is happy to share previous years' surveys and assessment results with existing or prospective clients and other third parties.

4. Responsible Investment Evaluation

It is core to our fundamental belief that strong RI practices enhance long-term value creation for our clients. Capital Dynamics defines RI evaluation as a process of the identification of potentially material sustainability opportunities and/or risks that could positively or negatively affect an investment made by any business line constituting its private assets platform. The following sub-sections provides examples of RI-related matters that the firm's investment teams typically research as part of their overall investment appraisal and due diligence processes.

Environmental

Investment decisions can have a long-term impact on the environment, the consequences of which may not be immediately visible. Similarly, important environmental matters such as climate change and biodiversity loss can have financial impacts on portfolio companies. Capital Dynamics is committed to managing environmental risks and seek financially attractive opportunities by:

- Identifying and assessing the environmental impact of investments to the degree economically feasible and operationally possible and assessing financially material risks and opportunities posed by environmental factors (such as climate change in line with the TCFD recommendations). The firm will aim to identify potential opportunities and risks by conducting environmental impact analysis⁵, working with potential business partners or third party service providers to help minimize risks and enhance value where possible. Capital Dynamics will seek to confirm compliance with applicable local environmental laws and regulations;
- Engaging, in certain cases, where greenhouse gas emissions are unavoidable, in offsetting measures to reduce the negative environmental impact of investments, such as the purchase of carbon-dioxide emissions certificates;
- Refraining from knowingly committing to certain investments that could potentially result in a serious negative impact on the environment, such as the severe degradation of air and water quality; and by
- Further developing a Clean Energy business line (established in 2010), Capital Dynamics is truly invested in providing investments in climate solutions in support of net zero with the potential for attractive risk-adjusted returns

In 2019, the firm removed all single use plastic bottles from its offices.

Social

Capital Dynamics is committed to improving the long-term welfare of society. In collaboration with its business partners and third party vendors, the firm aims to enhance societal fundamentals such as job creation, working conditions and health and safety standards by:

- Identifying and assessing social matters to the degree economically feasible and operationally possible. The firm seeks to confirm compliance with applicable local laws and regulations;

⁵ The firm may in its sole discretion commission the environmental impact study to external parties.

- Striving to ensure best practices are followed with respect to health and safety standards in the firm's direct and indirect investments;
- Refraining from knowingly investing in assets that could have a serious negative impact on the general welfare of society or on local communities;
- Aiming to align our business and investment practices with (a) the OECD Guidelines for Multinational Enterprises, and (b) UN Guiding Principles on Business and Human Rights;
- Favoring the use of unionized labor if it does not affect other RI goals; and by
- Seeking opportunities to invest in communities with a view to bringing local economic benefits.

Capital Dynamics is truly invested in the local communities where it operates. For investments in locations where union labor may be used, the firm supports freedom of association and the right to collective bargaining. The firm invests in the people with whom it interacts: clients, colleagues and the related communities around the globe. Capital Dynamics' professionals have taken part in numerous community initiatives including, but not limited to, neighborhood revitalization projects, charitable events and general community outreach. The firm's Communities Committee, an RI sub-committee, was formed in 2019 and manages the firm's charitable projects.

Governance

Good governance plays an important role in all of Capital Dynamics' investment decisions. The firm believes that good governance leads to better decisions and ultimately to improved investment outcomes. Governance failures can result in material monetary and reputational losses, as well as broader adverse effects on a company's workforce and other stakeholders. The firm's investment decision-making processes take general governance issues, business integrity and corporate governance into account by:

- Identifying and assessing matters related to governance to the degree economically feasible and operationally possible. The firm seeks to confirm compliance with the highest applicable governance standards. This may be in accordance with local regulations or international best practice, whichever is the more stringent;
- Actively monitoring portfolio operational performance including RI metrics, when acting as an active direct investor with the capacity to influence, whether via board representation or otherwise;
- Managing unresolved governance risks. Capital Dynamics is committed to solving any issues that arise on an ongoing basis; and by
- Refraining from knowingly making investments in companies that have a significant risk of governance failure and are considered to lack a high level of business integrity.

Capital Dynamics strives to be a fair and equitable workplace that places high importance on Governance. The firm implemented **RepRisk** (a leading business intelligence tool that enables dynamic RI risk analytics) for all investment strategies in 2020 to help monitor the firm's assets and, for certain business lines, the asset supply chain.

5. RI Assessment Overview

Capital Dynamics formally incorporates the PRI, the SDGs and other RI factors in investment appraisals, due diligence procedures and decision-making processes. The firm's proprietary R-Eye™ rating system for each business line is designed to review a specific set of Responsible Investment matters, assess sustainability risks and provide transparency to clients.

Capital Dynamics' business lines are likely to reject an investment on Responsible Investment grounds if certain essential R-Eye™ criteria are not met at the point of initial investment appraisal. However, the firm may consider an investment if it does not meet all R-Eye™ criteria on initial appraisal if it is believed that the required standard can be achieved at the time of investment or commitment, typically through robust RI negotiation with the asset owners. From time to time, business lines may invest in situations that do not meet all R-Eye™ criteria at completion provided that the investment team can demonstrate a clear action plan to achieve the required standards within a reasonable period of time post-investment (e.g., by implementing remedial action plans developed in the light of due diligence findings).

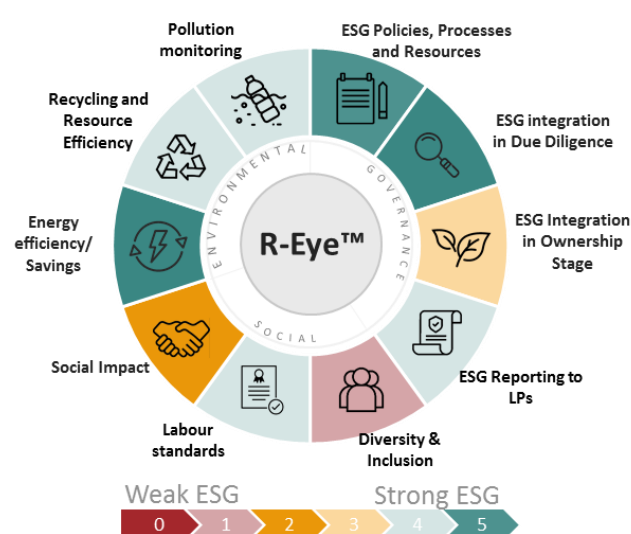
Proprietary Rating System

Capital Dynamics formally incorporates the PRI, the SDGs and other RI factors in investment appraisal, due diligence and decision-making.

In 2019, the **Capital Dynamics R-Eye™ Rating System** was implemented throughout all business lines to ensure a consistent and transparent approach to RI due diligence. The rating system is designed to review a specific set of Responsible Investment matters, assess sustainability risk and provide transparency to clients. Each investment made, regardless of business line, is rated on a 0 to 5 scale on the firm's proprietary R-Eye™ Scorecard. Investments with the weakest RI are rated 0 while investments which have the strongest RI are rated 5. In most cases, these ratings are based on standardized due diligence questionnaires and assessments which were developed by the investment teams within each business line and ratified by the firm's RI Committee.

Further, in 2023, we engaged with a third party to review the R-Eye™ scorecard used in our Clean Energy business line to ensure it meets the latest market standards and is fit for purpose to transparently measure the progress towards our impact targets launched for our latest Clean Energy funds.

Sample R-Eye™ and Scorecards



The image shows a sample R-Eye™ Due Diligence and On-going Assessment Chart for Co-Investment Situations. The chart is divided into several sections. At the top, there is a header section for 'R-Eye Due Diligence and ongoing Scorecard assessment file for Primary Private Equity Funds'. Below this, there is a section for 'R-Eye™ Due Diligence and On-going Assessment Chart for Co-Investment Situations'. This section includes a list of questions and a table for scoring. The questions are: 1. Governance Category (four equally-weighting rating criteria; answers would range from 1 to 5, '1' being an unacceptable risk and '5' being low risk). The following questions would be asked of all co-investment lead GPs/underlying companies during due diligence and on an annual assessment basis. 2. Policies, processes and resources. 3. Board representation. 4. Integration in ownership stage. The table for scoring has columns for 'Score' and 'Comments'. The scores are 0.0, 1.0, 2.0, 3.0, 4.0, and 5.0.

Exclusion Framework

Capital Dynamics' business lines are likely to reject an investment on Responsible Investment grounds if certain essential R-Eye™ criteria are not met at the point of initial investment appraisal. However, the firm may consider an investment if it does not meet all R-Eye™ criteria on initial appraisal if it is believed that the required standard can be achieved at the time of investment or commitment, typically through robust RI negotiation with the asset owners. From time to time, business lines may invest in situations that do not meet all R-Eye™ criteria at completion provided that the investment team can demonstrate a clear action plan to achieve the required standards within a reasonable period of time post-investment (e.g., by implementing remedial action plans developed in the light of due diligence findings).

Capital Dynamics will never knowingly invest⁶ in businesses which, above a certain materiality threshold:

- Exploit forced labor or child labor⁷ as defined by the International Labour Organization⁸;
- Manufacture or trade ammunition and/or weapons⁹;
- Manufacture, sell or distribute adult entertainment or pornography;
- Are involved in banned products, services or activities under global conventions and agreements such as those pertaining to pesticides, chemicals, wastes and endangered wildlife; or
- Exploit vulnerable groups in society (in the view of the relevant investment committee).

Business Line and Strategy-specific Approach

Given the inherent differences in Capital Dynamics' indirect and direct investment business lines (*i.e.*, fund-of-funds or Secondaries *versus* direct private equity), the firm's R-Eye™ grades each investment based on a set of criteria specific to the respective offering.

Please refer to sections 10 through 11 for further details at the level of each individual business line.

⁶ Commercially reasonable efforts

⁷ See section 6 on Modern Slavery Act

⁸ <https://www.ilo.org/ipec/facts/lang--en/index.htm>

⁹ Defined as a Portfolio Company that is primarily engaged in the production and sales of weapons, firearms and munitions. The foregoing shall not apply to an entity that is primarily engaged in the production or sale of any product or component that is not intended primarily for use in the manufacture of weapons, firearms and munitions.

Oversight

The RI Committee leads efforts by the firm to embrace the principles of Responsible Investment and sustainability in order continually to enhance Capital Dynamics' approach to corporate responsibility and to contribute to the discourse and thought leadership surrounding Responsible Investment in the alternative asset classes.

The chair of the RI Committee is Verena Rossolatos, Director. The chair holds observer seats in each of Capital Dynamics' Strategies' investment committees. Additionally, the membership of the committee requires representation by a senior investment team member from each of the firm's business lines. This helps ensure oversight and strategy-level implementation of the R-Eye™ System.

The RI Committee enjoys senior representation from each of the firm's key business lines including Private Equity and Clean Energy. As part of committee members' roles, these senior individuals serve as the RI Committee representative designated to evaluate all investment decisions made by their business lines. If these individuals identify complex RI issues during their investment review, it is their responsibility to refer the potential investment to the full RI Committee for review and consideration. The RI Committee will then issue a recommendation to the relevant investment committee, opining on best practice as it relates to the identified matter. The corresponding investment committee will consider this recommendation, along with other key investment, risk and portfolio considerations, in making a final investment decision. The same RI Committee review process also applies to managers and assets during the investment holding period. The RI Alert process is summarized in Figure 1 below. The RI Committee reports to the firm's Executive Committee and Risk Committee and its responsibilities are governed by the Responsible Investment Charter. In certain instances, firm-wide RI issues may be escalated to the Risk Committee for evaluation and consideration. To the extent required, the Risk Committee brings RI matters to the CEO and the board's attention.

The Chief Marketing Communications Officer, as the firm's ESG representative on the Executive Committee ("EC"), provides periodic updates on ESG matters to the EC. When significant ESG issues are identified, they are first brought to the Responsible Investment Committee for evaluation and to recommend next steps. In cases of firm-wide concern, the Chief Marketing Communications Officer escalates the issue to the Risk Committee for further review and action. If the situation necessitates, the Risk Committee will then inform the CEO and the Board for their consideration and decision-making.



Figure 1: Capital Dynamics RI Alert process

Conflicts of interest

As part of the formal review of complex RI matters in the RI Alert process, the RIC might face conflicts of interest arising from sustainability risks. The chair of the RIC refers such conflicts of interest to Capital Dynamics' Conflicts and Compliance Committee ("CCC"). The CCC consists of senior leadership and firm ownership and is responsible for reviewing conflict of interest matters and making decisions on remedial actions.

Guidelines on proxy voting and stewardship

Since proxy voting is not applicable for private equity investments, our guidelines on Stewardship focus on evaluating external managers based on their approach to RI integration and stewardship within private companies. We assess how managers incorporate RI considerations into their investment decision-making processes, including due diligence, value creation and governance improvements. We prioritize managers who actively engage with portfolio companies to implement robust RI practices, conduct regular RI performance reviews and drive meaningful changes. We invest with GPs who align with our RI ethos. When we do have board seats, we try to implement RI improvements as part of our board participation.

RI Education and Training

Capital Dynamics is committed to ensuring that all Capital Dynamics professionals receive RI training on at least an annual basis. The topics may vary but the overall purpose is to keep the firm's staff up to date regarding RI considerations, existing and upcoming regulations, best practices and raising awareness of key RI matters (for example climate change, biodiversity loss and human rights issues) and lessons learned in the alternative assets industry. Capital Dynamics views this annual training as essential in achieving the firm's external and internal initiatives given the ever-evolving landscape of RI on a global basis generally and in our industry specifically. The 2024 annual firm wide RI training was successfully completed by 100% of Capital Dynamics employees. Each business line also undertakes its own strategy specific RI training on an annual basis. All staff completed our unconscious bias training in 2022, which is an important milestone in our continuous drive to foster and enhance Ethnicity and Gender Diversity & Inclusion at our Firm.

6. Investment Monitoring

General

After an investment has been made, Capital Dynamics actively monitors its underlying investment portfolio holdings with respect to RI issues and opportunities. Monitoring activities include:

- Ongoing meetings with fund managers at Annual Investor Meetings (AIMs) and 1:1 meetings with Asset Managers to identify any RI-related issues and opportunities of underlying portfolio companies;
- Periodic meetings with the management of underlying portfolio or project companies to identify any RI-related issues and opportunities (such meetings solely in the case of the firm's business lines engaged in direct investment);
- Review and re-evaluation of potential issues identified during the fund/manager due diligence;
- Constant news monitoring to identify any potential issues in real time (*i.e.*, emerging RI issues are added to a 'watch' register for Private Equity and reported to the relevant investment management professionals and investment committees); and
- Review of the list of RI-related themes that are monitored and update of same list if needed.

Capital Dynamics also monitors its investments to evaluate best practices relating to a diverse range of topics including anti-bribery and corruption, sustainable sourcing and worker safety. Moreover, the firm has adopted a post-closing review, which includes confirmation that anti-bribery, corruption sanctions and conflict screenings are completed.

RepRisk

As part of our commitment to active monitoring of investments, Capital Dynamics has integrated RepRisk data in its RI process. RepRisk, a market-leading provider of RI data and analytics, is used to monitor all of the firm's investment assets and also the firm's own third party service providers to identify any supply chain issues. It is our belief that this tool effectively compliments the investment teams' ongoing monitoring of investments and managers. It further provides us with another source of information to communicate transparently with our clients if and when material RI-related issues are identified.

On a weekly basis, the Head of Investment Risk at Capital Dynamics reviews, together with the firm's RI Committee leadership, RepRisk Alerts to conduct a four-eye check on issues flagged by RepRisk and perform a materiality assessment of those issues. The resulting RI risks are then summarized and shared with the investment teams and where required further escalated to the Responsible Investment Committee.

Every RI risk flagged by RepRisk is linked to at least one of 28 RI issues. These issues correspond to international standards related to RI and business conduct, such as the:

- World Bank Group Environmental, Health, and Safety Guidelines;
- IFC Performance Standards;
- Equator Principles;
- OECD Guidelines for Multinational Enterprises; and

- ILO Conventions.

While an RI risk may not result in a banned investment, performing the RI risk review in conjunction with the RepRisk platform allows us to monitor our investments with respect to minimum social and environmental safeguards in accordance with international standards.

EarthScan™ by Mitiga

In 2024, we have partnered with a market-leading climate risk screening tool, EarthScan™ by Mitiga for our European Clean Energy business line. This tool enables us to conduct in-depth analysis of financially material climate risks, ultimately enhancing our location planning and climate adaptation measures for our European Clean Energy assets over time. The insights generated from this analysis will be instrumental in optimizing portfolio resilience in the face of climate-related challenges and we seek to incorporate the data-driven insights into our location planning of assets in the future.

Position Green

Position Green is a market-leading ESG data collection and analytics tool, which we have implemented for our Private Equity strategies during the course of 2024. This partnership will enhance our ESG data collection processes and improve future fund-level ESG reporting, such as offering the Sustainable Finance Disclosure Regulation (SFDR) Principal Adverse Impacts (PAIs) and the ESG Data Convergence Initiative (EDCI) data for our newer private equity funds going forward.

7. Reporting

Investor Reporting

Capital Dynamics reports RI matters to investors regularly. The firm's periodic fund reports include one or more sections on RI matters in the respective program's underlying assets and illustrate Capital Dynamics' R-Eye™ assessment. Further, Capital Dynamics has established processes to report RI-related incidents in a timely manner. Incidents are reported to the RI Committee chair and tracked on a central RI alert tracker. Depending on the severity of the incident, the chair will advise if the incident should be further reported to the RI Committee which would then review the matter recommend appropriate action, identifying lessons learned to share with the broader group. Capital Dynamics will also report to its clients any RI incidents in portfolio companies, assets and fund managers on an *ad hoc* basis if they are deemed sufficiently significant and relevant to a particular program.

Corporate Annual Responsible Investment Report

The firm issues an annual Responsible Investment report to investors detailing specific activities, milestones and new initiatives implemented in the previous year. The inaugural report was published in June 2020. The latest RI report (2023-2024) is available on the firm's website at: https://www.capdyn.com/Customer-Content/www/CMS/files/2023_2024_RI_Report_Capital_Dynamics_Final.pdf

SFDR Fund Reporting and European ESG Template ("EETs")

In 2022, Capital Dynamics issued its first Sustainable Finance Disclosure Regulation ("SFDR") fund-level investor reports for funds which are classified as Article 8 or Article 9. The firm welcomes the increased transparency and disclosure requirements introduced by the developing SFDR legislation and is committed

to further expand on its data collection under commercially reasonable endeavors. In 2024, Capital Dynamics issued the first set of EETs for our latest Future Essentials fund and our newer Clean Energy funds. We plan to expand the EET reporting offering for our Mid-Market Direct strategy in the future, subject to data availability.

SFDR Principal Adverse Impacts on Sustainability

Capital Dynamics considers Principal Adverse Impacts (“PAIs”) as defined in the SFDR at a product level for its sustainable investments in Article 9 funds. Our firm started reporting the PAI data points for our Article 9 products under commercially reasonable endeavors in 2023, for the reference period of 2022. We disclose the Principal Adverse Impacts in our periodic SFDR fund reports.

Taskforce on Climate-related Financial Disclosures (“TCFD”)

Capital Dynamics has been a supporter of the TCFD reporting framework since 2020. Our firm has established robust processes and hired in-house expertise to meet the 11 recommended disclosures by the Taskforce on Climate-related Financial Disclosures. The chair of Responsible Investment is responsible for identifying and assessing financially material climate risks (transition risks and physical climate risks), utilizing a variety of specialized tools, including scenario analysis. The 2023 TCFD report is available on the firm’s website at:

<https://www.capdyn.com/news/2023-task-force-on-climate-related-financial-disclosures-tcf-d-report/>

8. Statement on Modern Slavery Act

Modern Slavery is defined as the act of recruiting, providing, concealing, transporting or obtaining a person for compelled labor through the use of force, coercion, or fraud. Such actions will restrict a person's freedom of movement, exercise 'ownership' over a person, dehumanize the individual and ultimately result in forced labor or exploitation. Capital Dynamics is opposed to all forms of Modern Slavery.

Capital Dynamics supports the UK's Modern Slavery Act 2015 and corresponding policies with the objective to eradicate forced labor and human trafficking. Capital Dynamics acts in accordance with its core values while taking into account internationally-recognized principles for environmental protection, human and labor rights, business ethics and anti-corruption. This includes improving business practices and investment monitoring to combat Modern Slavery. The firm is committed to respecting human rights and avoiding investments that would violate the Modern Slavery Act 2015. International agreements lay out the basis on which the firm conducts business in a responsible and transparent manner.

Capital Dynamics specializes in middle market corporate investing and clean energy investing with offices around the globe. The firm is committed to preventing any form of Modern Slavery or human trafficking throughout its business.

As a responsible investor, Capital Dynamics has a long-standing commitment to corporate responsibility. The firm conducts its investment activities according to best practices and uses this policy document as a guiding tool.

The data identified from the firm's R-Eye™ investment appraisal and due diligence are tracked and analyzed during the investment holding period to better understand and reduce RI risks including those related to Modern Slavery and human trafficking. The process is also used when working with service providers and external suppliers. Capital Dynamics will not conduct business with any supplier or service provider where the firm has determined that such organization may be involved in any form of Modern Slavery or human trafficking. The latest Modern Slavery Act disclosure is available on our website at: https://www.capdyn.com/Customer-Content/www/CMS/files/Modern_Slavery_Act_Statement_2023_Final.pdf

9. Engagement, Industry Memberships and Disclosures

As the firm continues to expand its Responsible Investment program, Capital Dynamics maintains a list of relevant RI partner organizations and memberships which create potential synergies and provide valuable insights and benefits. The firm is currently a member or supporter of the following organizations:

- UN-supported Principles for Responsible Investment ("PRI");
- Global Real Estate Sustainability Benchmark ("GRESB");
- Partnership for Carbon Accounting Financials ("PCAF");
- Institutional Investors Group on Climate Change ("IIGCC");
- Taskforce on Climate-Related Financial Disclosures ("TCFD");
- Pensions for Purpose;
- Invest Europe;
- Forum per la Finanza Sostenibile
- ILPA Diversity in Action;

- iC International; and
- Out Investors.

As a result of these memberships, the firm attends relevant RI events, joins Responsible Investment panels, and participates in lobbying initiatives for a sustainable economy.

Engagement with policy makers and standard setters

Capital Dynamics actively engages with standard setters and policy makers through direct engagement, active participation in targeted working groups and participating in sign-on letter initiatives. Examples of recent engagement activities include:

- In 2024, Capital Dynamics actively participated in the IIGCC (Institutional Investor Group on Climate Change) working group focused on developing supplementary net zero guidance for infrastructure investors. Through this collaboration, we contributed insights from our experience in private markets and clean energy, helping shape practical recommendations to support the alignment of infrastructure investments with net zero goals
- In 2023, Capital Dynamics engaged with EU Policy makers on the SFDR industry consultation and participated in numerous PRI-led working groups aimed at promoting greater transparency around sustainability (for example, expressing support for the adoption of the ISSB sustainability reporting standards). Capital Dynamics regularly engages with targeted working groups to promote sustainable investment practices in private markets
- In 2022, Capital Dynamics submitted commentary to the SEC expressing strong support for proposed rules regarding the enhancement and standardization of climate-related disclosures for investors
- Following our belief that strong policy action is needed to address financial risks associated with climate change, Capital Dynamics, alongside a worldwide group of investors collectively managing nearly \$39 trillion in AUM, has signed an open letter calling on governments radically to raise their climate ambition ahead of and beyond COP27 in 2022. This Global Investor Statement urges governments to implement domestic policies and take early action to ensure that their 2030 greenhouse gas emissions are aligned with the goal of keeping global temperature rise to 1.5°C.
- Over the course of the past two years, Capital Dynamics has co-led the IIGCC working group to steer the Net Zero Investment Framework (“NZIF”) component for Private Equity. The guidance aims to create synergies in the market among LPs and GPs to collectively drive the decarbonization of portfolio companies, and builds upon a pragmatic, science-aligned approach the private equity industry can support.

For more information on our latest engagement with policy makers, please visit our website at: <https://www.capdyn.com/about-us/responsible-investment/case-studies/engagement-with-policy-makers-and-industry-associations/>

10. Strategy-specific approach — Private Equity

Capital Dynamics has been active in private equity since 1988¹⁰ and has developed a strong network of relationships with 350+ fund managers. Capital Dynamics integrates RI into its investment due diligence, investment decisions and post-investment monitoring. The private equity business lines screen investment opportunities against internal RI hurdles using the Capital Dynamics R-Eye™ scorecard and monitor responsible investment criteria throughout the ownership phase.

Primaries

Capital Dynamics' primaries platform targets investments in middle market private equity funds throughout the US, Europe and Asia pursuing growth capital, buy-out, turnaround or special situations strategies.

Pre-investment responsible investment assessment

All potential private equity fund commitments are formally assessed in the investment appraisal and due diligence process under Capital Dynamics' specific predetermined R-Eye™ criteria including:

- Assessment of each manager's RI processes, systems and resources;
- Assessment of each manager's RI analysis in its due diligence processes and ownership phase;
- The extent to which each manager reports on RI matters to its limited partners ;
- The extent to which the manager looks at diversity, labor standards and social impact at firm, portfolio company and supplier level, and climate change; and
- The extent to which the manager considers energy efficiency savings, recycling and use of natural resources and pollution control at firm, portfolio company and supplier level.

These findings are summarized in the investment memorandum materials that are presented to the relevant investment committees. Any prior RI alerts on a manager are outlined in the investment memorandum for reference.

Post-investment responsible investment monitoring

After an investment has been made, fund investments are monitored by the combined private equity team as well as the Solutions and Risk team via:

- Monitoring of relevant industry press articles and the mainstream press;
- Regular 1:1 calls, webcasts and meetings with the managers;
- Attendance at the manager's annual investor meetings;
- Active monitoring of all underlying portfolio companies during the holding period utilizing RepRisk¹¹; and
- At least annual reassessment of R-Eye™ scorecard ratings to show movements from the previous rating.

¹⁰ Acquisition and integration of Westport Private Equity Ltd.'s entire investment team and products in 2005.

¹¹ As of 2020.

Secondaries

Capital Dynamics' Secondaries team acquires interests in funds and assets managed by private equity firms with a history of strong performance and consistent strategy and execution. The team focuses on established, high quality, mature leveraged buy-out funds, growth capital funds and certain established venture capital funds. The team's differentiated approach capitalizes on its expertise in executing smaller and more complex secondary transactions on a global basis, including fund restructurings, tail-end wind-down transactions and preferred interest structures.

The firm's primary and secondary business lines often work with the same fund managers, creating synergies between both strategies. In such instances, the two business lines may collaborate and share findings of RI analysis.

Pre-investment responsible investment assessment

All secondary opportunities are assessed during the investment appraisal and due diligence process under Capital Dynamics' specific predetermined Responsible Investment criteria. In a secondary transaction, only limited information regarding a manager's RI processes and RI factors in the underlying portfolio companies may be available. However, the team can often draw on the knowledge of Capital Dynamics' other private equity investment activities. Subject to the extent available and materiality thresholds, the analysis may include:

- Assessment of each manager's RI processes, systems and resources;
- Assessment of each manager's RI analysis in its due diligence processes and ownership phase;
- The extent to which each manager reports on RI matters to its limited partners;
- The extent to which the manager looks at diversity, labor standards and social impact at firm, portfolio company and supplier level; and
- The extent to which the manager considers energy efficiency savings, recycling and use of natural resources and pollution control at the firm, portfolio company and supplier level.

The RI findings are summarized in the investment memorandum materials that are presented to the relevant investment committees.

Post-investment responsible investment monitoring

After an investment has been made, fund investments are monitored, subject to materiality thresholds, by the combined private equity team via:

- Monitoring of relevant industry press articles and the mainstream press;
- Regular 1:1 calls, webcasts and meetings with the managers;
- Active monitoring of all underlying portfolio companies during the holding period utilizing RepRisk¹²;
- Attendance at the manager's annual investor meetings; and
- At least annual reassessment of R-Eye™ scorecard ratings to show movements from the previous rating.

Direct Investments

The direct investment team makes direct investments in middle-market companies alongside established private equity fund managers and specialist sponsors. Underlying portfolio company investments are

¹² As of 2020.

diversified throughout the clean energy & industrial manufacturing/services, consumer, healthcare & financial services and technology & business services sectors. The team is active globally.

Pre-investment responsible investment assessment

The direct investment team screens all opportunities against an exclusion list and prioritizes those focused on R-Eye™ criteria using a proprietary framework and appraisal process based on the SDGs. Appraisal includes both the sponsor/GP's and the target company's approach to Responsible Investment. The team strives to incorporate R-Eye™ criteria in the legal documentation of transactions which proceed to completion. The team invests in leading companies with sustainable competitive positions, strong growth prospects and high Responsible Investment standards as determined in conjunction with the SDGs. The team mainly invests in companies based in North America and Europe (including the United Kingdom) but typical portfolios also include a minority of holdings elsewhere (*e.g.*, in the higher growth, emerging markets of Asia).

Investment appraisal and due diligence criteria typically encompass the following:

- Responsible Investment policies, processes, systems, innovation, economic growth and resources of the sponsor/GP and those of the underlying company;
- Board composition and the importance of Responsible Investment matters at the board level;
- Measurement and analysis of Responsible Investment matters during the ownership phase at the level of the sponsor/GP and that of the underlying portfolio company;
- The nature and extent of Responsible Investment reporting by the sponsor/GP to its investors;
- Consideration of ethnicity, diversity & inclusion, gender equality, affordable & clean energy, quality education, good health, nutrition and well-being and health & safety at the sponsor/GP, portfolio company and supply chain levels; and
- Consideration of energy competitiveness/efficiency/intensity, climate change, water consumption/quality, sustainable transportation/infrastructure, recycling and use of natural resources and pollution control at the sponsor/GP, Portfolio Company and supply chain levels.

The investment appraisal and due diligence findings relating to R-Eye™ matters are summarized in the direct investment memorandum presented to the relevant investment committees of the firm.

Post-investment responsible investment monitoring

After an investment has been made, the direct investment team continues to monitor its portfolio company holdings, as follows:

- Review of periodic reporting to ensure compliance with the underlying transaction documentation (*e.g.*, with covenants requiring the sponsor/GP and/or underlying portfolio company to introduce or maintain appropriate Responsible Investment strategies and/or to remedy deficiencies identified during due diligence or otherwise);
- Review of any Responsible Investment incidents or infractions;
- Review of relevant industry press articles and the mainstream/financial press;

- Periodic meetings with the sponsor/GP and attendance at the board meetings of underlying portfolio companies (where the team enjoys board representation by virtue of the transaction documentation);
- Active monitoring of all underlying portfolio companies during the holding period utilizing RepRisk¹³;
- Attendance at the AIMs of the sponsor/GP and those of the underlying portfolio company; and
- At least annual re-assessment of the R-Eye™ ratings for the underlying portfolio company assets.

By focusing on long-term value creation through improvement in R-Eye™ parameters, the direct investment team intends to mitigate risks, enhance returns and improve exit opportunities. The team's intention is to leave a portfolio company in a better state from a Responsible Investment perspective than the one in which it was found at the start of its stewardship.

11. Strategy-specific approach — Clean Energy

Capital Dynamics has been committed to the Clean Energy strategy since 2010, investing primarily and directly into energy generation utilizing proven renewable energy related technologies and storage. Clean Energy investments focus on energy generation and infrastructure that are reducing carbon emissions and help to address the problem of climate change.

Commitment to net zero

The firm supports the Paris Agreement and net zero through its investment in Clean Energy projects. Our investments into solar and wind energy projects represent ambitious net zero targets aimed at scaling investments into climate solutions with attractive risk-adjusted returns for our clients. Further, our Clean Energy investments help meeting global targets including the SDGs and the Kyoto Protocol, simultaneously providing a solution for members of the RE100, a list of over 370 companies committed to 'go 100% renewable'.¹⁴

All of our solar and wind assets contribute substantially to or enable emissions reductions to support decarbonization in line with credible 1.5°C pathways towards net zero. Since inception of our Clean Energy business line, our projects have avoided emissions which is disclosed on our website ticker [here](#). The avoided emissions figures are updated bi-annually to reflect the emissions savings from our Clean Energy assets.

Our focus on wind energy and solar PV projects are crucial to the transition to a net zero economy and corresponding policy goals, such as the EU Green Deal and the UK's net zero plans. Our new funds are committing to net zero initiatives through:

- Decarbonization targets with reduction of construction emissions¹⁵ and operational emissions¹⁶
- Offsetting residual emissions with verified carbon removal project
- Measurement of construction and operational emissions

¹³ As of 2020.

¹⁴ Source: <http://there100.org/>

¹⁵ For example, through solar powered temporary offices, use of electric vehicles for worker transportation and waste reduction

¹⁶ Reduce own energy usage of investments and increase procurement of renewable energy at asset level

Approach to Responsible Investment

Within Capital Dynamics' Clean Energy business line, Responsible Investment means investing in sustainable energy projects, which:

- Contribute to climate change mitigation while ensuring their operations do not adversely impact the environment;
- Support the local communities, employ local talent whenever possible and implement fair labor and responsible contracting policies;
- Implement strong governance policies;
- Generate superior returns for the firm's clients.

For the avoidance of doubt, the exclusion framework contained in this Policy and the exclusions triggered by the RepRisk assessment, all together adhere to the exclusion criteria referred to as the **Paris-Aligned Benchmark (PAB)** exclusions contained in Article 12(1)(a) to (g) of CDR (EU) 2020/1818 for our European Clean Energy funds, which are subject to the ESMA guidelines on fund names. The PAB exclusions are applied to ensure alignment with the ESMA Guidelines on funds' names using ESG or sustainability-related terms (ESMA 34-1592494965-657). There may be overlaps across exclusions. In case of overlap between the exclusions, the stricter threshold shall apply.

Capital Dynamics believes that businesses focused on long-term value creation for major stakeholders (including employees, customers, suppliers, other business partners and the environment as well as shareholders) are able to meet high-quality R-Eye™ criteria and achieve superior long-term performance. The firm prioritizes opportunities to invest in projects based on these criteria.

Capital Dynamics' Clean Energy business line screens investment opportunities against internal RI hurdles using the R-Eye™ scorecard, performs additional due diligence where necessary and monitors R-Eye™ criteria throughout the holding period. The Clean Energy team is further supported by a dedicated RI resource that focuses on RI monitoring and improvements throughout the investment lifecycle.

The Capital Dynamics Clean Energy business line has introduced an asset-level ESG policy and a responsible contractor policy. Both documents are available on our website at: <https://www.capdyn.com/investment-strategies/clean-energy/>

Pre-investment responsible investment assessment

As part of the underwriting process, all potential investments are evaluated based on short-, medium- and long-term environmental, social and governance effects and are formally assessed under the firm's R-Eye™ criteria, specifically:

- Initial screening selection process undertaken to identify any "fatal flaws" from a Responsible Investment perspective;
- Thereafter, an R-Eye™ scorecard is provided at each stage of the Clean Energy investment committee review process in accordance with the Clean Energy team's Responsible Investment framework;
- Investment professionals are required to review all existing documentation available, retain consultants and advisors when information is insufficient and report diligence findings in the scorecard evaluation;

- The Clean Energy team reviews proposed project contractors' RI credentials, performance and disclosures and applies the same Exclusion Framework to contractors and main suppliers as for investments to manage risks and avoid incidents; and
- Capital Dynamics' constant news monitoring via RepRisk highlights potential issues in real-time, which may be relevant, based on geographic, industry or company-specific considerations.

Post-investment responsible investment monitoring

After an investment has been made, the Clean Energy team continues to monitor projects in partnership with its dedicated asset management team, Netro Energy, Ltd. Monitoring activities include:

- Quarterly reporting of the Capital Dynamics R-Eye™, showing an up-to-date assessment of project RI evaluation;
- Quarterly reporting of carbon-equivalent statistics (*e.g.*, homes powered, metric tons of greenhouse gas emissions avoided, passenger vehicle emissions avoided, equivalent gallons of gasoline and equivalent barrels of oil otherwise consumed by each project for a stated energy output);
- Quarterly reporting of Responsible Investment activities in the period including those in relation to Health & Safety, Environment and the Supply Chain;
- Annual reporting of investor specific carbon-equivalent statistics through 'Clean Energy green certificates';
- Reviewing project contractors' RI credentials, performance and disclosures to evaluate opportunities and avoid incidents during project construction and operation;
- The use of RepRisk to monitor all assets and suppliers within the Clean Energy portfolio;
- Continuous correspondence with our asset management partners or affiliates who are responsible for the day-to-day management of project investments and oversee any RI-related risks and opportunities including any health and safety incidents (and responses to the same);
- Publishing performance metrics of the portfolio; and
- Measuring and reporting SFDR PAI data for Article 9 Clean Energy funds.

Each year, Capital Dynamics' Clean Energy business line participates in the internationally recognized GRESB assessment, an industry-standard benchmark or an alternative recognized reporting assessment, designed to capture information regarding RI performance and sustainability best practices for real estate and infrastructure portfolios globally.

By focusing on long-term value creation for all stakeholders, Capital Dynamics' Clean Energy business line intends to enhance returns to clients, mitigate risks and improve exit opportunities.

12. Attestation

Provided below is a list of the voting members of the **Capital Dynamics' Responsible Investment Committee**. This committee oversees the implementation of RI best practices in the firm's investment decision-making, directs efforts by the firm to embrace principles of Responsible Investment fully as an organization and seeks to contribute to the public discourse surrounding Responsible Investment and RI matters in the alternative assets community generally.

Each voting member has signaled her/his agreement with and wholehearted support for this Responsible Investment policy in this attestation by signing below:

Verena Rossolatos

Verena Rossolatos, Director
Chair Responsible Investment

Simonne Cepollina

Simonne Cepollina, Senior Associate
Client Relations and RI Committee Secretary

Carolyn Hirschbiel

Carolyn Hirschbiel, Senior Managing Director
Chief Marketing & Communications Officer

Helen Lais

Helen Lais, Senior Managing Director
Head of Primaries, U.S., Private Equity

Barney Coles

Barney Coles, Senior Managing Director
Clean Energy

Dario Bertagna

Dario Bertagna, Senior Managing Director
Clean Energy

Mauro Pfister

Mauro Pfister, Managing Director
Secondaries

David Smith

David Smith, Senior Managing Director
Direct Investments

Klaus Gierling

Klaus Gierling, Senior Managing Director
Head of Business Development, DACH & Benelux

Carolyn Skuce

Carolyn Skuce, Senior Managing Director, Business
Development, UK LGPS, Australia and New Zealand

Kairat Perembetov

Kairat Perembetov, Director
Research

Philippe Jost

Philippe Jost, Managing Director
Head of Risk & Solutions

Disclaimer

“Capital Dynamics” comprises Capital Dynamics Holding AG and its affiliates.

The information contained herein is provided for informational purposes only and is not and may not be relied on as investment advice, an investment recommendation, an offer to sell, or a solicitation of an offer to buy any interest in any fund or any security, commodity, financial instrument or derivatives linked to, or otherwise included in, a portfolio managed or advised by Capital Dynamics, or an offer to enter into any other transaction whatsoever. Any such offer or solicitation, if made, shall be made pursuant to a private placement memorandum furnished by Capital Dynamics. No person has been authorized to make any statement concerning the information contained herein other than as set forth herein, and any such statement, if made, may not be relied upon. Recipients should make their own investigations and evaluations of the information contained herein prior to making an investment decision. Nothing contained herein may be relied upon as a guarantee, promise, assurance, representation or warranty. This presentation is strictly confidential, is intended only for the person to whom it has been provided and may not be shown, reproduced or redistributed in whole or in part (whether in electronic or hard copy form) to any person other than the authorized Recipient without the prior written consent of Capital Dynamics.

Further, this document may contain information that has been provided by a number of sources not affiliated with Capital Dynamics. Capital Dynamics has not verified any such information. Nothing contained herein shall constitute any representation or warranty and no responsibility or liability is accepted by Capital Dynamics as to the accuracy or completeness of any information supplied herein.

This document may contain past performance and projected performance information. It must be noted that past performance and projected performance is not a reliable indicator or guarantee of future results and there can be no assurance that any fund managed by Capital Dynamics will achieve comparable results. Certain statements contained in this document may include statements of future expectations and other forward-looking statements. Due to various risks and uncertainties, actual events or results or actual performance may differ materially from those reflected or contemplated in such forward-looking statements.

Except where otherwise indicated herein, the information provided herein, including any forecasts contained herein and their underlying assumptions, are based on matters as they exist as of the date of preparation and not as of any future date, and will not be updated or otherwise revised to reflect information that subsequently becomes available, or circumstances existing or occurring after the date hereof. Capital Dynamics does not purport that any such assumptions will reflect actual future events, and reserves the right to change its assumptions without notice to the Recipient. Any forecasts contained herein are intended to be provided in on-on-one presentations to the Recipient. Capital Dynamics has not independently verified the information provided and does not assume responsibility for the accuracy or completeness of such information.

The Recipient should not construe this document as a binding legal agreement or the contents of this document as legal, tax, accounting, investment or other advice. Each investor should make its own inquiries and consult its advisors as to any legal, tax, financial and other relevant matters concerning an investment in any fund or other investment vehicle. Capital Dynamics does not render advice on tax accounting matters to clients. This document was not intended or written to be used, and it cannot be used by any taxpayer for the purpose of avoiding penalties which may be imposed on the taxpayer under U.S. federal tax laws. Federal and state tax laws are complex and constantly changing. The Recipient should always consult with a legal or tax adviser for information concerning its individual situation.

When considering alternative investments, such as private equity funds, the Recipient should consider various risks including the fact that some funds may use leverage and engage in a substantial degree of speculation that may increase the risk of investment loss, can be illiquid, are not required by law to provide periodic pricing or valuation information to investors, may involve complex tax structures and delays in distributing important tax information, often charge high fees, and in many cases the underlying investments are not transparent and are known only to the investment manager. Any such investment involves significant risks, including the risk that an investor will lose its entire investment.

By accepting delivery of this document, each Recipient agrees to the foregoing and agrees to return the document to Capital Dynamics promptly upon request.